

# Child Neglect and Abuse

## DEFINITION

*Child neglect and abuse* is the total unduplicated number of victims of child neglect and abuse per 1,000 children. Child neglect includes emotional, educational, physical, and medical neglect, as well as a failure to provide for basic needs. Child abuse includes physical, sexual, and emotional abuse.

## SIGNIFICANCE

Children need love, affection, and nurturing from their parents and caregivers for healthy physical and emotional development. Experiencing child neglect or abuse can have lifelong consequences for a child's health, well-being, and relationships with others. Parents and caregivers are at increased risk for maltreating children if they are overwhelmed by multiple risk factors such as poverty, substance abuse, intergenerational trauma, isolation, or unstable housing.<sup>1</sup> Children who have been maltreated often face long-term consequences including chronic health and psychological problems. They are at increased risk for delinquency, substance use disorders, mental health problems, teen pregnancy, and impaired cognition.<sup>2,3</sup>

Responding to reports of child neglect and abuse and ensuring child safety are important functions of child protection systems. Prioritizing prevention is equally critical and cost-effective. In Rhode Island, if an investigation does not reveal

maltreatment but family stressors and risk factors are identified, the Department of Children, Youth and Families (DCYF) refers families to community-based support services to reduce the risk of future involvement with DCYF. When maltreatment has occurred, a determination may be made that it is safe for the children to remain at home with support services provided to their family. In both cases, DCYF makes referrals to regional Family Care Community Partnership (FCCP) agencies that work with families to identify services and resources, including natural supports (persons and resources that families can access independent from formal services).<sup>4,5</sup>

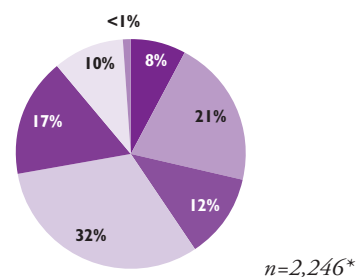
In 2024, 2,176 calls were made to the family referral line (1-888-RI-FAMILY), where families can call to access services previously available only through DCYF involvement. Over half of calls (62%) resulted in a service referral or general information response.<sup>6</sup>

In 2024 in Rhode Island, there were 1,818 indicated investigations of child neglect and abuse involving 2,293 children. The rate of child neglect and abuse per 1,000 children under age 18 was greater in the four core cities (14.7 victims per 1,000 children) than in the remainder of the state (8.9 victims per 1,000 children). Forty-two percent of the victims of child neglect and abuse were young children ages five and under and 29% were ages three and younger.<sup>7</sup>

## Child Neglect and Abuse, Rhode Island, 2024

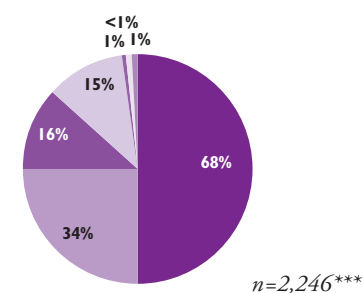
### By Age of Victim\*

8% (179)	Under Age 1
21% (480)	Ages 1 to 3
12% (279)	Ages 4 to 5
32% (712)	Ages 6 to 11
17% (375)	Ages 12 to 15
10% (220)	Ages 16 and Older
<1% (<6)	Unknown



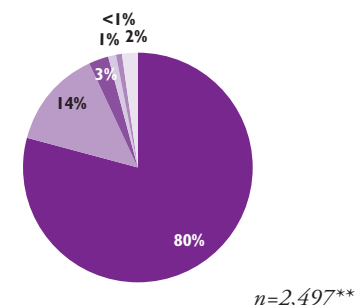
### By Race/Ethnicity of Victim\*\*\*

68% (1,517)	White
34% (753)	Hispanic
16% (355)	Black
15% (327)	Two or More Races
1% (18)	Asian/Native Hawaiian/Other Pacific Islander
<1% (11)	American Indian/Alaska Native
1% (18)	Unknown



### By Type of Neglect/Abuse\*\*

80% (1,989)	Neglect
14% (341)	Physical Abuse
3% (87)	Sexual Abuse
1% (19)	Medical Neglect
<1% (8)	Emotional Abuse
2% (53)	Other



Source: Rhode Island DCYF, Rhode Island Children's Information System (RICHIST), 2024. Percentages may not sum to 100% due to rounding.

### Notes on Pie Charts

\*These data reflect an unduplicated count of child victims which includes out-of-state child victims. The number of victims is higher than the number of indicated investigations. One indicated investigation can involve more than one child victim.

\*\*This number is greater than the unduplicated count of child victims because children often experience more than one maltreatment event and/or more than one type of abuse. Within each type of abuse, the number of child victims is unduplicated.

\*\*\*Hispanic children may be included in any race category.



# Child Neglect and Abuse

## DCYF Child Protective Services (CPS) Hotline Calls for Reports of Neglect and/or Abuse, Investigations,\* and Indicated Investigations, Rhode Island, 2015-2024

YEAR	TOTAL # UNDUPLICATED CHILD MALTREATMENT REPORTS	% AND # OF REPORTS WITH COMPLETED INVESTIGATIONS	# OF INDICATED INVESTIGATIONS
2015	14,402	45% (6,470)	2,227
2016	14,942	40% (5,935)	2,074
2017	15,945	42% (6,628)	2,404
2018	21,837	38% (8,296)	2,430
2019	19,401	37% (7,240)	2,249
2020	16,195	35% (5,661)	1,861
2021	14,876	34% (4,978)	1,704
2022	14,417	33% (4,742)	1,749
2023	15,670	30% (4,752)	1,700
2024	17,191	23% (3,951)	1,592

Source: Rhode Island Department of Children, Youth and Families, RIC HIST, 2015-2024.

\*One investigation can be generated by multiple hotline calls. Investigations can result in a finding of indicated, unfounded, or unable to complete (as when essential party cannot be found).

◆ From 2018 to 2024 in Rhode Island, the number of unduplicated child maltreatment reports decreased by 21%, the number of completed investigations decreased by 52%, and the number of indicated investigations decreased by 34%. In 2024, 40% of the 3,951 completed investigations were indicated investigations in which there is a “preponderance of evidence” that a child has been abused and/or neglected. Targeted, ongoing prevention efforts by DCYF focused on ways to help families before a CPS call is warranted is likely the reason for declines in reporting in recent years. Although the number of reports increased from 2023, the number of indicated investigations continues to steadily decrease.<sup>8,9,10</sup>

◆ Of the 17,191 maltreatment reports in 2024, 71% (12,250) were classified as “information/ referrals”.<sup>11</sup> Information/referrals are reports made to the CPS Hotline that contain a concern about the well-being of a child but do not meet the criteria for an investigation. Criteria for investigation include that the victim is a minor, the alleged perpetrator is responsible for the child’s welfare, there is reasonable cause to believe that neglect or abuse exist, and there is a specific incident or pattern of incidents suggesting that harm can be identified. In 2019, DCYF began using a standardized screening tool to determine whether Hotline reports that do not meet the criteria for investigation should be referred for family assessment, which may lead to the development of a safety plan with the family, including referral and delivery of other services.<sup>12</sup>

## Emergency Department Visits, Hospitalizations, and Deaths Due to Child Neglect and/or Abuse, Rhode Island, 2019-2023

YEAR	# OF EMERGENCY DEPARTMENT VISITS*	# OF HOSPITALIZATIONS*	# OF DEATHS**
2019	85	38	–
2020	100	98	–
2021	82	106	–
2022	104	102	–
2023	95	115	–
<b>TOTAL</b>	<b>466</b>	<b>459</b>	<b>&lt;5</b>

Source: Rhode Island Department of Health, 2019-2023.

\*The number of Emergency Department visits and the number of hospitalizations include both suspected and confirmed assessments of child neglect and abuse.

\*\*Due to a change in data source, data for child deaths due to child neglect and/or abuse are only comparable with Factbooks since 2013.

\*\* Data contain small numbers. Counts from 1–4 are suppressed as <5. Rates should not be calculated from counts <5. Dashes (–) represent suppressed numbers.

◆ Between 2019 and 2023, there were 466 emergency department visits, 459 hospitalizations, and <5 deaths of Rhode Island children under age 18 due to child neglect and/or abuse.<sup>13</sup> Nationally in 2023, 78% of child maltreatment deaths involved neglect and 42% involved physical abuse (because a victim may have suffered more than one type of maltreatment, these categories are not mutually exclusive).<sup>14</sup>

## Child Neglect and Abuse in Rhode Island Communities

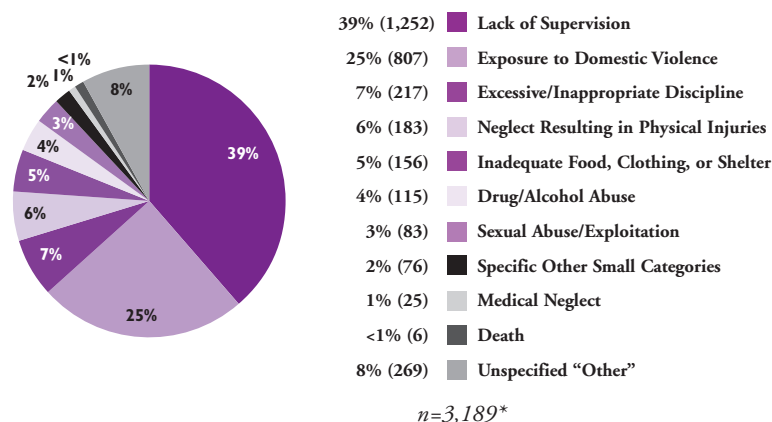
◆ Many parents at risk of child neglect and abuse are struggling with a combination of social and economic issues including financial stress, community violence, and/or trauma. These families can benefit from programs that enhance economic resources and concrete supports including Earned Income and Child Tax Credits, high quality affordable child care, health care, safe and stable housing, as well as social supports, and knowledge of child development. Increased access to economic resources and concrete supports significantly lower the risk of child maltreatment.<sup>15,16</sup>

◆ In Rhode Island in 2024, 95% (2,288) of child neglect and abuse cases were perpetrated by parents of the victim.<sup>17</sup> Rhode Island had 10.9 child victims of neglect and abuse per 1,000 children. Woonsocket (24.4 victims per 1,000 children), had the highest rate of child victims of neglect and abuse in the state.<sup>18</sup>



# Child Neglect and Abuse

Indicated Allegations of Child Neglect,  
by Nature of Neglect, Rhode Island, 2024



Source: Rhode Island Department of Children, Youth and Families, RICHIST, 2024.

*\*The total refers to indicated allegations of neglect. Some children were victims of neglect more than once. Multiple allegations may be involved in each indicated investigation.*

◆ Of the 3,189 indicated allegations (confirmed claims) of neglect of children under age 18 in Rhode Island in 2024, 39% involved lack of supervision. This highlights the importance of access to high-quality, affordable, child care, preschool, and after-school programs.<sup>19</sup>

◆ The second largest category of neglect (25%) is “exposure to domestic violence.” These are instances where neglect is related to the child witnessing domestic violence in the home.<sup>20</sup>

◆ The “specific other small categories” include educational neglect (37), corporal punishment (12), emotional neglect (7), tying/close confinement (6), inappropriate restraint (<6), abandonment (<6), failure to thrive (<6), and emotional abuse (<6).<sup>21</sup>

## Child Sexual Abuse, by Gender and Age of Victim, Rhode Island, 2024

◆ In Rhode Island in 2024, there were 83 indicated allegations (confirmed claims) of child sexual abuse, and <6 of these cases were reported as school-based sexual molestation/exploitation. Some children were victims of sexual abuse more than once. There were 70 (84%) female victims and 13 (16%) male victims with confirmed allegations. Thirty-six percent of all victims were under age 12.<sup>22</sup>

◆ In most child sexual abuse cases, the perpetrator is a relative or person known to the victim. Sexual abuse by a stranger is less likely.<sup>23</sup>

## Early Intervention & Infants and Toddlers Involved with the Child Welfare System

◆ Because maltreated infants and toddlers are at increased risk for developmental delays, federal law requires states to screen and/or refer infants and toddlers who have experienced neglect or abuse to Early Intervention (EI) for eligibility determination and services. A national study found that over 35% of infants and toddlers involved in child welfare investigations had delays or disabilities that would make them eligible for EI, but only 13% were receiving services.<sup>24</sup>

◆ Rhode Island specifically allows infants and toddlers who have experienced trauma, neglect, or abuse to be determined eligible for EI through “informed clinical opinion – family circumstances” even if the child does not have a measurable developmental delay or disability.<sup>25</sup>

◆ In Rhode Island in State Fiscal Year 2024, there were 561 children under age three who were victims of child neglect or abuse or involved with an indicated case. Of these, 499 (89%) were referred to First Connections or Early Intervention for screening/evaluation. Of the 184 infants and toddlers referred to EI for evaluation, 135 (73%) were determined eligible for EI. Of all 561 victims, 24% were determined eligible for EI.<sup>26</sup>



# Child Neglect and Abuse

Table 27.

Indicated Investigations of Child Neglect and Abuse, Rhode Island, 2024

CITY/TOWN	# OF CHILDREN UNDER AGE 18	# OF INDICATED INVESTIGATIONS OF CHILD NEGLECT/ABUSE	INDICATED INVESTIGATIONS PER 1,000 CHILDREN	# OF VICTIMS OF CHILD NEGLECT/ABUSE	VICTIMS OF CHILD NEGLECT/ABUSE PER 1,000 CHILDREN
Barrington	4,489	<6	0.9	9	2.0
Bristol	2,887	15	5.2	22	7.6
Burrillville	3,229	22	6.8	32	9.9
Central Falls	6,411	63	9.8	83	12.9
Charlestown	1,161	7	6.0	7	6.0
Coventry	6,655	44	6.6	73	11.0
Cranston	15,744	92	5.8	92	5.8
Cumberland	7,550	33	4.4	47	6.2
East Greenwich	3,465	13	3.8	18	5.2
East Providence	7,886	76	9.6	95	12.0
Exeter	1,175	7	6.0	9	7.7
Foster	790	14	17.7	14	17.7
Glocester	1,896	19	10.0	11	5.8
Hopkinton	1,613	14	8.7	9	5.6
Jamestown	871	0	0.0	0	0.0
Johnston	5,119	27	5.3	46	9.0
Lincoln	4,640	38	8.2	47	10.1
Little Compton	568	0	0.0	0	0.0
Middletown	3,487	20	5.7	22	6.3
Narragansett	1,651	7	4.2	11	6.7
New Shoreham	189	<6	0.0	6	31.7
Newport	3,660	30	8.2	52	14.2
North Kingstown	5,496	37	6.7	42	7.6
North Providence	5,802	64	11.0	72	12.4
North Smithfield	2,274	10	4.4	13	5.7
Pawtucket	16,455	176	10.7	239	14.5
Portsmouth	3,444	11	3.2	22	6.4
Providence	41,021	441	10.8	527	12.8
Richmond	1,627	8	4.9	14	8.6
Scituate	1,866	8	4.3	11	5.9
Smithfield	3,411	19	5.6	19	5.6
South Kingstown	4,339	21	4.8	26	6.0
Tiverton	2,723	18	6.6	18	6.6
Warren	1,826	24	13.1	29	15.9
Warwick	14,034	125	8.9	169	12.0
West Greenwich	1,251	<6	3.2	<6	2.4
West Warwick	5,787	84	14.5	91	15.7
Westerly	3,826	43	11.2	62	16.2
Woonsocket	9,467	177	18.7	231	24.4
Unknown Residence	NA	20	NA	<6	NA
Out of State	NA	33	NA	NA	NA
Four Core Cities	73,354	857	11.7	1,080	14.7
Remainder of State	136,431	961	7.0	1,213	8.9
Rhode Island	209,785	1,818	8.7	2,293	10.9

## Source of Data for Table/Methodology

Data are from the Rhode Island Department of Children, Youth and Families, Rhode Island Children's Information System (RICHIST), Calendar Year 2024. These data include child victims living out-of-state and in unknown residences.

Victims of child neglect/abuse are unduplicated counts of victims with substantiated allegations of child neglect and/or abuse. More than one victim can be involved in an investigation.

An indicated investigation is an investigated report of child neglect and/or abuse for which a preponderance of evidence exists that child neglect and/or abuse occurred. An indicated investigation can involve more than one child and multiple allegations.

The denominator is the number of children under age 18 according to the U.S. Census 2020 and the numerator is an unduplicated count of child victims.

Core cities are Central Falls, Pawtucket, Providence, and Woonsocket.

## References

<sup>1,15</sup> U.S. Department of Health and Human Services, Administration for Children and Families. (2023). *2023/2024 prevention resource guide*. Children's Bureau

<sup>2</sup> Child Welfare Information Gateway. (2019). *Long-term consequences of child abuse and neglect*. U.S. Department of Health and Human Services, Children's Bureau.

<sup>3</sup> Strathearn, L., Giannotti, M., Mills, R., Kisely, S., Najman, J., & Abajobir, A. (2020). Long-term cognitive, psychological, and health outcomes associated with child abuse and neglect. *Pediatrics*, 146(4).

<sup>4</sup> Rhode Island Department of Children, Youth and Families. (n.d.) The Family Services Unit. Retrieved January 17, 2025, from <https://dcyf.ri.gov/services/division-family-services>

<sup>5,10</sup> Rhode Island Department of Children, Youth and Families. (n.d.). *Program: Family Care Community Partnerships (FCCPs)*. Retrieved January 17, 2025, from <https://dcyf.ri.gov/services/behavioral-health/central-referral-unit>

<sup>6,7,8,11,17,18,19,20,21,22</sup> Rhode Island Department of Children, Youth and Families, Rhode Island Children's Information System (RICHIST), 2015-2024.

(continued on page 184)



# References

- <sup>22</sup> National Juvenile Justice Network. (2021). *Policy platform: Raise the minimum age for trying children in juvenile court*. Retrieved March 24, 2025, from <https://nyjn.org/publications/raise-the-minimum-age-for-trying-children-in-juvenile-court/>
- <sup>23</sup> National Juvenile Justice Network. (2023). *Brief: Charting U.S. minimum ages of jurisdiction, detention, and commitment*. Retrieved March 24, 2025, from <https://nyjn.org/publications/brief-charting-u-s-minimum-ages-of-jurisdiction-detention-and-commitment/>
- <sup>24</sup> American Academy of Child and Adolescent Psychiatry. (2023). *Policy statement on the jurisdiction of the juvenile court system*. Retrieved March 24, 2025, from [https://www.aacap.org/aacap/Policy\\_Statements/2023/Policy\\_Statement\\_Policy\\_Statement\\_Jurisdiction\\_Juvenile\\_Court\\_System.aspx](https://www.aacap.org/aacap/Policy_Statements/2023/Policy_Statement_Policy_Statement_Jurisdiction_Juvenile_Court_System.aspx)
- <sup>25</sup> Dodds, K. (2020). *Why all states should embrace Vermont's Raise the Age Initiative*. [Web log message]. Retrieved March 24, 2025, from <https://www.juvjustice.org/blog/1174>
- <sup>26</sup> Thomas, J., Aswad, J., Rankin, K., & Roberts, H. (2019). *Raising the floor: Increasing the minimum age of prosecution as an adult*. Retrieved March 24, 2025, from [https://www.prisonpolicy.org/scans/Raising\\_the\\_Floor\\_Final.pdf](https://www.prisonpolicy.org/scans/Raising_the_Floor_Final.pdf)
- <sup>28</sup> Rhode Island Office of the Attorney General, March 2025.

(continued from page 97)

## References for Youth in the Justice System

- <sup>4</sup> American Academy of Child and Adolescent Psychiatry. (2017). *Teen brain: Behavior, problem solving, and decision making*. Retrieved from [https://www.aacap.org/AACAP/Families\\_and\\_Youth/Facts\\_for\\_Families/FFF-Guide/The-Teen-Brain-Behavior-Problem-Solving-and-Decision-Making-095.aspx](https://www.aacap.org/AACAP/Families_and_Youth/Facts_for_Families/FFF-Guide/The-Teen-Brain-Behavior-Problem-Solving-and-Decision-Making-095.aspx)
- <sup>6,29</sup> Mendel, R. A. (2011). *No place for kids: The case for reducing juvenile incarceration*. The Annie E. Casey Foundation.
- <sup>7</sup> Owen, M.C., Wallace, S.B., AAP Committee on Adolescence. (2020). Advocacy and collaborative health care for justice-involved youth. *Pediatrics*, 146(1): e20201755.

- <sup>8</sup> McCarthy, P., Schiraldi, V. & Shark, M.. (2016). *The future of youth justice: A community-based alternative to the youth prison model. new thinking in community corrections bulletin*. U.S. Department of Justice, National Institute of Justice. NCJ 250142.

- <sup>9,11,28</sup> Rhode Island Department of Children, Youth and Families. (n.d.) *Division of Youth Development: Program mission*. Retrieved February 14, 2025, from <https://dcyf.ri.gov/services/division-youth-development>

- <sup>10,12,13,15,16,17,21,22,25,31,36,38,44</sup> Rhode Island Department of Children, Youth and Families, Rhode Island Children's Information System (RICHIST), 2008-2024.

- <sup>14,34</sup> State of Rhode Island. (n.d.). OJJDP FY 2018 Title II Formula Grants Program: State of Rhode Island 2018 – 2020 Three Year Plan. Retrieved from [https://ojjdp.ojp.gov/sites/g/files/xyckuh176/files/media/document/ri-fy18-state-plan\\_508.pdf](https://ojjdp.ojp.gov/sites/g/files/xyckuh176/files/media/document/ri-fy18-state-plan_508.pdf)

- <sup>18,19</sup> National Youth Justice Network (2023). *Brief: Charting U.S. minimum ages of jurisdiction, detention, and commitment*. Retrieved February 14, 2025, from <https://nyjn.org/publications/brief-charting-u-s-minimum-ages-of-jurisdiction-detention-and-commitment/>

- <sup>20</sup> Office of Juvenile Justice and Delinquency Prevention. (2024). *Age boundaries of the juvenile justice system literature review: a product of the model programs guide*. Retrieved February 14, 2025, from <https://ojjdp.ojp.gov/model-programs-guide/literature-reviews/age-boundaries-of-the-juvenile-justice-system>

- <sup>23</sup> Office of Juvenile Justice and Delinquency Prevention. (n.d.). *Girls and the juvenile justice system*. Retrieved from <https://rights4girls.org/wp-content/uploads/r4g/2016/08/OJJDP-Policy-Guidance-on-Girls.pdf>

- <sup>24</sup> Rovner, J. (2021). *Racial disparities in youth incarceration persist*. The Sentencing Project.

- <sup>26</sup> U.S. Census Bureau, 2020 Census, P2,P4.

- <sup>27</sup> Rhode Island KIDS COUNT. (n.d.). *Juvenile Detention Alternatives Initiative*. Retrieved from [www.rikidscount.org](http://www.rikidscount.org)

- <sup>32</sup> Viljoen, J. L., Jonnson, M. R., Cochrane, D. M., Vargen, L. M., & Vincent, G. M. (2019). Impact of risk assessment instruments on rates of pretrial detention, postconviction placements, and release: A systematic review and meta-analysis. *Law and Human Behavior*, 43(5), 397–420.

- <sup>33,42,43</sup> Rhode Island General Law, Section 14-1-11 and 14-1-27.

- <sup>35</sup> Child Welfare Information Gateway. (2019). *Long-term consequences of child abuse and neglect*. Retrieved February 14, 2025, from <https://www.childwelfare.gov/resources/long-term-consequences-child-abuse-and-neglect/>

- <sup>37</sup> Rhode Island Department of Children, Youth and Families, Rhode Island Training School, Clinical Services, 2024.

- <sup>39,40,41</sup> Rhode Island Department of Children, Youth and Families, Rhode Island Training School, Education Services, 2023-2024.

(continued from page 99)

## References for Children of Incarcerated Parents

- <sup>12</sup> The Annie E. Casey Foundation. (2016). *A shared sentence: The devastating toll of parental incarceration on kids, families and communities*. Retrieved from [www.aecf.org](http://www.aecf.org)

- <sup>19</sup> Goger, A., Harding, D. J., & Henderson, H. (2021). Rethinking prisoner reentry. *Contexts*, 20(4), 46-51.

- <sup>20</sup> Californians for Safety and Justice. (2018). *Repairing the road to redemption in California*. Retrieved from <https://safeandjust.org>

(continued from page 101)

## References for Children Witnessing Domestic Violence

- <sup>6,14</sup> Zeoli, A. (2018). *Children, domestic violence, and guns*. The National Resource Center on Domestic Violence and Firearms.

- <sup>7</sup> Guedes, A., Bott, S., Garcia-Moreno, C., & Colombini, M. (2016) Bridging the gaps: A global review of intersections of violence against women and violence against children, *Global Health Action*, 9(1)

- <sup>8</sup> Office of Women's Health. (2019) *Effects of domestic violence on children*. Retrieved March 26, 2025, from <https://womenshealth.gov/relationships-and-safety/domestic-violence/effects-domestic-violence-children>

- <sup>10</sup> Tsavoussis, A., Stawicki, S. P., Stoicesa, N., & Papadimos, T. J. (2014). Child-witnessed domestic violence and its adverse effects on brain development: A call for societal self-examination and awareness. *Frontiers in public health*, 2, 178.

- <sup>11,12</sup> The National Child Traumatic Stress Network. (n.d.) *Intimate partner violence: Effects*. Retrieved March 26, 2025, from <https://www.nctsn.org/what-is-child-trauma/trauma-types/intimate-partner-violence/effects>

- <sup>13</sup> DomesticShelters.org. (2023). *3 steps to break the domestic violence cycle in kids' lives*. Retrieved March 26, 2025, from <https://www.domesticshelters.org/articles/children-and-domestic-violence/3-steps-to-break-the-cycle-of-domestic-violence-in-kids-lives>

- <sup>16</sup> Domestic Violence and Sexual Assault/Child Molestation Reporting Form, Rhode Island Domestic Violence Training and Monitoring Unit, 2017

- <sup>18</sup> Rhode Island Coalition Against Domestic Violence. (2022). *2021 Annual report*. <https://ricadv.org/annual-reports/>

- <sup>19</sup> Rhode Island Coalition Against Domestic Violence, 2024.

- <sup>20</sup> Sojourner House, 2024.

- <sup>21</sup> DeBoard-Lucas, R., Wasserman, K., McAlister Groves, B., & Bair-Merritt, M. (2013). *Promising futures: 16 trauma-informed, evidence-based recommendations for advocates working with children exposed to intimate partner violence*.

- <sup>22</sup> The Educational Fund to Stop Gun Violence. (2020). *Domestic Violence and Firearms*. [efsgv.org](https://efsgv.org)

- <sup>23</sup> Rhode Island General Law 8-8.3-3

(continued from page 105)

## References for Child Neglect and Abuse

- <sup>9</sup> Rhode Island Department of Children, Youth and Families. (2024). *Guide for parents and caregivers involved with child protective services (CPS): Rights, responsibilities, and answers to frequently asked questions*. Retrieved February 12, 2025, from <https://dcyf.ri.gov/sites/g/files/xkgbur416/files/2024-08/A.%20%202024%20CPS%20brochure%20%20English%20%201000%20copies.pdf>

- <sup>12</sup> *Child Protective Services rules and regulations*, 214-RICR-20-00-1. (2022). Retrieved February 9, 2024, from [https://rules.sos.ri.gov/Regulations/part/214-20-00-1?reg\\_id=9168](https://rules.sos.ri.gov/Regulations/part/214-20-00-1?reg_id=9168)

- <sup>13</sup> Rhode Island Department of Health, Hospital Discharge Data and Vital Records, 2019-2023.



- <sup>14</sup> U.S. Department of Health & Human Services, Administration for Children and Families, Administration on Children, Youth and Families, Children's Bureau. (2025). *Child maltreatment 2023*. Retrieved February 12, 2025, from <https://www.acf.hhs.gov/cb/data-research/child-maltreatment>.
- <sup>16</sup> Monahan, E. K., Grewal-Kök, Y., Cusick, G., & Anderson, C. (2023). *Economic and concrete supports: An evidence-based service for child welfare prevention*. Chapin Hall at the University of Chicago.
- <sup>23</sup> Centers for Disease Control and Prevention. (2024). *About child sexual abuse*. Child Abuse and Neglect Prevention. Retrieved February 12, 2025, from <https://www.cdc.gov/child-abuse-neglect/about/about-child-sexual-abuse.html>

(continued from page 107)

## References for Children in Out-of-Home Placement

- <sup>1</sup> National Conference of State Legislatures. (2019). *The child welfare placement continuum: What's best for children?* Retrieved April 13, 2022, from [www.ncsl.org](http://www.ncsl.org)
- <sup>2</sup> U.S. Department of Health and Human Services, Administration for Children and Families. (1998). *Program instruction: Adoption and Safe Families Act of 1997*. Retrieved March 4, 2025, from <https://acf.gov/sites/default/files/documents/cb/pi9814.pdf>
- <sup>3,19</sup> Casey Family Programs. (2009). *Fostering Connections to Success and Increasing Adoptions Act: Improving lives and opportunities for children in foster care*. Retrieved March 3, 2025, from <https://www.casey.org/media/FosteringConnectionsSummary.pdf>
- <sup>4</sup> *Child and family services reviews: Statewide assessment instrument – Rhode Island*. (2018). U.S. Department of Health and Human Services, Administration for Children and Families.
- <sup>5</sup> Child Welfare Information Gateway. (2022). *Health-care coverage for children and youth in foster care—and after*. U.S. Department of Health and Human Services, Administration for Children and Families, Children's Bureau.
- <sup>6</sup> The American Academy of Pediatrics. (2021). *Mental and Behavioral Health Needs of Children in Foster Care*. Retrieved March 4, 2025, from <https://www.aap.org/en/patient-care/foster-care/mental-and-behavioral-health-needs-of-children-in-foster-care/?srsltid=AfmBOoQD-rfmjVGawDmSu-GSP1T-rs3kXjly47Oe5nuBmjigYyohkzK4>
- <sup>7,8</sup> Somers, C.L., Goutman, R.L., Day, A., Enright, O., Crosby, S., & Taussig, H. (2020). Academic Achievement Among a Sample of Youth in Foster Care: The Role of School Connectedness. *Psychology in the Schools*, 57(12), 1845-1863.
- <sup>9</sup> Rhode Island Department of Education, *Rhode Island Comprehensive Assessment System (RICAS)*, 2017-2018.
- <sup>10</sup> Child Welfare Information Gateway. (2021). *Child Welfare Practice to Address Racial Disproportionality and Disparity*. U.S. Department of Health and Human Services, Children's Bureau.
- <sup>11,12,13,14,21,24,25</sup> Rhode Island Department of Children, Youth and Families, Rhode Island Children's Information System (RICHIST), 2023-2024.
- <sup>15</sup> Rhode Island Department of Children, Youth and Families, Rhode Island Children's Information System (RICHIST). December 31, 2022.
- <sup>16</sup> Rivera, M., Cooper, N., Steiger, D., & Tatum, L. (2023). *Brief: Reducing foster care placement through equity-focused implementation of family first*. Center on Poverty and Inequality, Georgetown Law.
- <sup>17</sup> Rhode Island Department of Children, Youth and Families. (n.d.). Family First Prevention Service Act (FFPSA). Retrieved March 4, 2025, from <https://dcyf.ri.gov/programs/initiatives/family-first-ffpsa>
- <sup>18</sup> Washington, T., & Mihalec-Adkins, B. P. (2023). *Kinship care supports the academic performance of children*. Child Trends. <https://doi.org/10.56417/6688s365k>
- <sup>20</sup> Rhode Island Department of Children, Youth and Families. (2012). *Legal guardianship and kinship guardianship assistance (Policy 700.0245)*.
- <sup>22</sup> Casey Family Programs. (2022). *Strong Families information packet: What are the outcomes for youth placed in group and institutional settings?* Retrieved March 4, 2025, from [https://www.casey.org/media/22.07-QFF-SF-Group-placements\\_fnl-1.pdf](https://www.casey.org/media/22.07-QFF-SF-Group-placements_fnl-1.pdf)
- <sup>23</sup> Family Focused Treatment Association. (n.d.). *What is treatment foster care?* Retrieved March 4, 2025, from <https://www.ffa.org/page/DefiningTFC>
- <sup>26</sup> U.S. Census Bureau, 2020 Census P2,P4

(continued from page 109)

## References for Outcomes for Children in DCYF Care

- <sup>2</sup> Wedeles, J. (n.d.). *Placement stability in child welfare*. Retrieved February 19, 2025, from <https://www.oacas.org/wp-content/uploads/2016/08/PARTicle-Placement-Stability-in-Child-Welfare-FINAL.pdf>
- <sup>4</sup> Casey Family Programs. (2018). *Strong Families strategy brief: What are some effective strategies for achieving permanency?* Retrieved February 20, 2025, from <https://www.casey.org/effective-strategies-achieving-permanency/>
- <sup>6</sup> Casey Family Programs. (2023). *Strong Families strategy brief: How can we improve placement stability for children in foster care?* Retrieved February 20, 2025, from <https://www.casey.org/strategies-improve-placement-stability/>
- <sup>7</sup> Child Welfare Information Gateway. (2020). *Reasonable efforts to preserve or reunify families and achieve permanency for children*. U.S. Department of Health and Human Services, Administration for Children and Families, Children's Bureau.
- <sup>8</sup> Child Welfare Information Gateway. (n.d.). *Achieving and maintaining permanency*. Retrieved February 20, 2025, from [www.childwelfare.gov](http://www.childwelfare.gov)
- <sup>9</sup> Children's Bureau. (2024). *What does it mean to be a legal guardian; where can I find information?* Retrieved February 20, 2025, from <https://acf.gov/cb/faq/custody3>
- <sup>10</sup> Guidry, A.A. (2019). *Why relative placement is best for a child in need of care*. American Bar Association. Retrieved February 20, 2025, from <https://www.americanbar.org/groups/litigation/resources/newsletters/childrens-rights/why-relative-placement-best-child-need-care/>
- <sup>11</sup> Children's Defense Fund. (2010). *Fostering Connections to Success and Increasing Adoptions Act (H.R. 6893) summary*. Retrieved February 20, 2025, from <https://www.childrensdefense.org/wp-content/uploads/2023/08/FCSIAA-detailed-summary.pdf>
- <sup>12</sup> Rosenberg, R. & Abbott, S. (n.d.). *Supporting older youth beyond age 18: Examining data and trends in extended foster care*. Child Trends.
- <sup>13</sup> Brewsbaugh, K., Richardson, A., & Loveless, A. (2021). *State approaches to extending Chafee services to age 23*. Retrieved February 20, 2025, from <https://acf.gov/opre/report/state-approaches-extending-chafee-services-age-23-insights-inform-learning-agenda>
- <sup>14,15,16,20,21,31</sup> Rhode Island Department of Children, Youth and Families, Data Analytics and Evaluation from Permanency Analytic Reports, FFY 2021-FFY 2023.
- <sup>17</sup> Capacity Building Center for States. (2021). *What factors support family reunification?* Children's Bureau Express, 22(6).
- <sup>18</sup> Casey Family Programs. (2020). *Strong Families strategy brief: Why should child protection agencies adopt a kin-first approach?* Retrieved February 20, 2025, from <https://www.casey.org/kin-first-approach/>
- <sup>19</sup> Rhode Island Department of Children, Youth and Families. (2022). *Foster care and adoption regulations for licensure (214-RICR-40-00-3)*. Retrieved February 20, 2025, from <https://rules.sos.ri.gov/Regulations/part/214-40-00-3>
- <sup>22</sup> Rhode Island Department of Children, Youth and Families. (n.d.). *Voluntary Extension of Care Program*. Retrieved February 20, 2025, from <https://dcyf.ri.gov/services/family-service-unit/voluntary-extension-care-vec>
- <sup>23,24</sup> Rhode Island Department of Children, Youth and Families, Voluntary Extension of Care Program Data, December 31, 2024.
- <sup>25</sup> Child Welfare Information Gateway. (n.d.). *Reunifying families*. Retrieved February 20, 2025, from <https://www.childwelfare.gov/topics/permanency/reunifying-families/>
- <sup>26</sup> National Quality Improvement Center on Family-Centered Reunification. (2021). *Family-centered reunification in child welfare: A review of best practices*. Retrieved February 20, 2025, from <https://qicfamilyreunification.org/wp-content/uploads/2021/03/QICRcatalog.pdf>
- <sup>27</sup> LaBrenz, C.A., Fong, R., & Cubbin, C. (2020). The road to reunification: Family and state system-factors associated with successful reunification for children ages zero-to-five. *Child Abuse & Neglect*, 99, 104252.
- <sup>28</sup> Rhode Island Department of Children, Youth and Families, Rhode Island Children's Information System (RICHIST), 2023-2024.
- <sup>29,30</sup> Rhode Island Department of Children, Youth and Families. (2024). *Children waiting for adoption on January 1, 2025*. Data Analytics and Evaluation.