

Child Neglect and Abuse

DEFINITION

Child neglect and abuse is the total unduplicated number of victims of child neglect and abuse per 1,000 children. Child neglect includes emotional, educational, physical, and medical neglect, as well as a failure to provide for basic needs. Child abuse includes physical, sexual, and emotional abuse.

SIGNIFICANCE

Children need love, affection, and nurturing from their parents and caregivers for healthy physical and emotional development. Experiencing child neglect or abuse can have lifelong consequences for a child's health, well-being, and relationships with others. Parents and caregivers are at increased risk for maltreating children if they are overwhelmed by multiple risk factors such as poverty, substance abuse, intergenerational trauma, isolation, or unstable housing.¹ Children who have been maltreated often face long-term consequences including chronic health and psychological problems. They are at increased risk for delinquency, substance use disorders, mental health problems, teen pregnancy, and impaired cognition.^{2,3} Responding to reports of child neglect and abuse and ensuring child safety are important functions of child protection systems.⁴ Prioritizing prevention is equally critical and cost-effective.⁵ In Rhode Island, if an investigation does not reveal

maltreatment but family stressors and risk factors are identified, the Department of Children, Youth and Families (DCYF) refers families to community-based support services to reduce the risk of future involvement with DCYF. When maltreatment has occurred, a determination may be made that it is safe for the children to remain at home with support services provided to their family. In both cases, DCYF makes referrals to regional Family Care Community Partnership (FCCP) agencies that work with families to identify services and resources, including natural supports (persons and resources that families can access independent from formal services).^{6,7}

In 2025, 1,957 calls were made to the family referral line (1-888-RIFAMILY), where families can call to access services previously available only through DCYF involvement. Two-thirds of calls (67%) resulted in a service referral or general information response.⁸

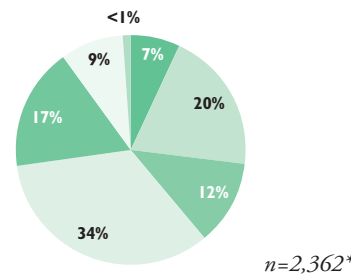
In 2025 in Rhode Island, there were 1,931 indicated investigations of child neglect and abuse involving 2,108 children. The rate of child neglect and abuse per 1,000 children under age 18 was twice as high in the five core cities (14.9 victims per 1,000 children) as in the remainder of the state (7.2 victims per 1,000 children). Forty percent of the victims of child neglect and abuse were young children ages five and under and 28% were ages three and younger.⁸



Child Neglect and Abuse, Rhode Island, 2025

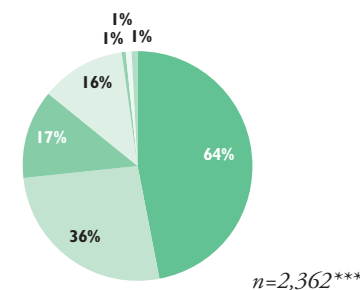
By Age of Victim*

7% (174)	■ Under Age 1
20% (480)	■ Ages 1 to 3
12% (286)	■ Ages 4 to 5
34% (803)	■ Ages 6 to 11
17% (403)	■ Ages 12 to 15
9% (213)	■ Ages 16 and Older
<1% (3)	■ Unknown



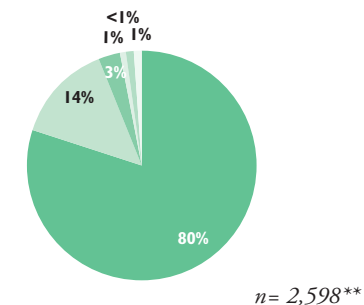
By Race/Ethnicity of Victim***

64% (1,500)	■ White
36% (864)	■ Hispanic
17% (397)	■ Black
16% (389)	■ Two or More Races
1% (29)	■ Asian/Native Hawaiian/Other Pacific Islander
1% (25)	■ American Indian/Alaska Native
1% (22)	■ Unknown



By Type of Neglect/Abuse**

80% (2,070)	■ Neglect
14% (369)	■ Physical Abuse
3% (88)	■ Sexual Abuse
1% (24)	■ Medical Neglect
<1% (13)	■ Emotional Abuse
1% (34)	■ Other



Source: Rhode Island DCYF, Rhode Island Children's Information System (RICHIST), 2025. Percentages may not sum to 100% due to rounding.

Notes on Pie Charts

*These data reflect an unduplicated count of child victims which includes out-of-state child victims. The number of victims is higher than the number of indicated investigations. One indicated investigation can involve more than one child victim.

**This number is greater than the unduplicated count of child victims because children often experience more than one maltreatment event and/or more than one type of abuse. Within each type of abuse, the number of child victims is unduplicated.

***Hispanic children may be included in any race category.



DCYF Child Protective Services (CPS) Hotline Calls for Reports of Neglect and/or Abuse, Investigations, * and Indicated Investigations, Rhode Island, 2016-2025

YEAR	TOTAL # UNDUPLICATED CHILD MALTREATMENT REPORTS	% AND # OF REPORTS WITH COMPLETED INVESTIGATIONS	# OF INDICATED INVESTIGATIONS
2016	14,942	40% (5,935)	2,074
2017	15,945	42% (6,628)	2,404
2018	21,837	38% (8,296)	2,430
2019	19,401	37% (7,240)	2,249
2020	16,195	35% (5,661)	1,861
2021	14,876	34% (4,978)	1,704
2022	14,417	33% (4,742)	1,749
2023	15,670	30% (4,752)	1,700
2024	17,191	23% (3,951)	1,592
2025	18,125	21% (3,886)	1,652

Source: Rhode Island Department of Children, Youth and Families, RIC HIST, 2016-2025.

*One investigation can be generated by multiple hotline calls. Investigations can result in a finding of indicated, unfounded, or unable to complete (as when essential party cannot be found).

◆ From 2018 to 2025 in Rhode Island, the number of unduplicated child maltreatment reports decreased by 32%, the number of completed investigations decreased by 53%, and the number of indicated investigations decreased by 17%. In 2025, 43% of the 3,886 completed investigations were indicated investigations in which there is a “preponderance of evidence” that a child has been abused and/or neglected. The number of reports increased from 2024, but there was a decrease in completed investigations and a slight increase in the number of indicated investigations.⁷⁻⁹

◆ Of the 18,125 maltreatment reports in 2025, 75% (13,661) were classified as “information/ referrals”.⁸ Information/referrals are reports made to the CPS Hotline that contain a concern about the well-being of a child but do not meet the criteria for an investigation. Criteria for investigation include that the victim is a minor, the alleged perpetrator is responsible for the child’s welfare, there is reasonable cause to believe that neglect or abuse exists, and there is a specific incident or pattern of incidents suggesting that harm can be identified. In 2019, DCYF began using a standardized screening tool to determine whether Hotline reports that do not meet the criteria for investigation should be referred for family assessment, which may lead to the development of a safety plan with the family, including referral and delivery of other services.¹⁰



Emergency Department Visits, Hospitalizations, and Deaths Due to Child Neglect and/or Abuse, Rhode Island, 2020-2024

YEAR	# OF EMERGENCY DEPARTMENT VISITS*	# OF HOSPITALIZATIONS*	# OF DEATHS**
2020	100	98	–
2021	82	106	–
2022	104	102	–
2023	95	115	–
2024	114	136	–
TOTAL	495	557	<5

Source: Rhode Island Department of Health, 2020-2024.

*The number of Emergency Department visits and the number of hospitalizations include both suspected and confirmed assessments of child neglect and abuse.

**Due to a change in data source, data for child deaths due to child neglect and/or abuse are only comparable with Factbooks since 2013.

**Data contain small numbers. Counts from 1-4 are suppressed as <5. Rates should not be calculated from counts <5. Dashes (-) represent suppressed numbers.

◆ Between 2020 and 2024, there were 495 emergency department visits, 557 hospitalizations, and <5 deaths of Rhode Island children under age 18 due to child neglect and/or abuse.¹¹ Nationally in 2024, 78% of child maltreatment deaths involved neglect and 40% involved physical abuse (because a victim may have suffered more than one type of maltreatment, these categories are not mutually exclusive).¹²



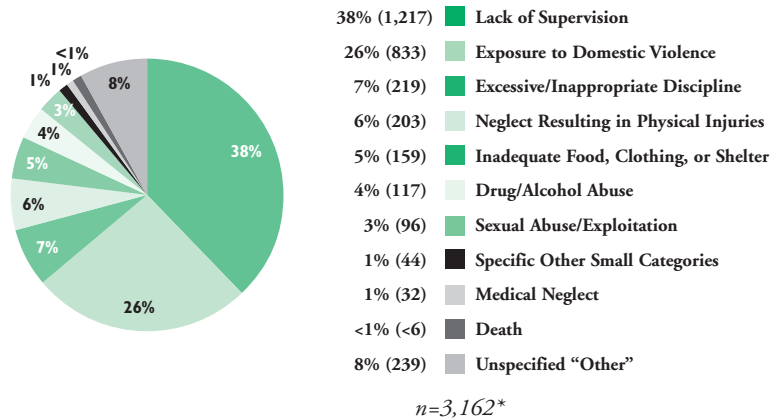
Child Neglect and Abuse in Rhode Island Communities

◆ Many parents at risk of child neglect and abuse are struggling with a combination of social and economic issues including financial stress, community violence, and/or trauma. These families can benefit from programs that enhance economic resources and concrete supports including Earned Income and Child Tax Credits, high quality affordable child care, health care, safe and stable housing, as well as social supports, and knowledge of child development. Increased access to economic resources and concrete supports significantly lowers the risk of child maltreatment.^{1,13}

◆ In Rhode Island in 2025, 95% (2,343) of child neglect and abuse cases were perpetrated by parents of the victim.⁸ Rhode Island had 10.0 child victims of neglect and abuse per 1,000 children. Woonsocket (21.9 victims per 1,000 children), had the highest rate of child victims of neglect and abuse in the state.⁸

Child Neglect and Abuse

Indicated Allegations of Child Neglect, by Nature of Neglect, Rhode Island, 2025



Source: Rhode Island Department of Children, Youth and Families, RIC HIST, 2025.

*The total refers to indicated allegations of neglect. Some children were victims of neglect more than once. Multiple allegations may be involved in each indicated investigation.

- ◆ Of the 3,162 indicated allegations (confirmed claims) of neglect of children under age 18 in Rhode Island in 2025, 38% involved lack of supervision. This highlights the importance of access to high-quality, affordable child care, preschool, and after-school programs.⁸
- ◆ The second largest category of neglect (26%) is “exposure to domestic violence.” These are instances where neglect is related to the child witnessing domestic violence in the home.⁸
- ◆ The “specific other small categories” include educational neglect (11), emotional neglect (10) abandonment (8), emotional abuse (<6) inappropriate restraint (<6), corporal punishment (<6), malnutrition/starvation (<6), and tying/close confinement (<6).⁸

Child Sexual Abuse, by Gender and Age of Victim, Rhode Island, 2025

◆ In Rhode Island in 2025, there were 96 indicated allegations (confirmed claims) of child sexual abuse, and <6 of these cases were reported as school-based sexual molestation/exploitation. Some children were victims of sexual abuse more than once. There were 82 (85%) female victims and 14 (15%) male victims with confirmed allegations. Forty-six percent of all victims were under age 12.⁸

◆ In most child sexual abuse cases, the perpetrator is a relative or person known to the victim. Sexual abuse by a stranger is less likely.¹⁴

Early Intervention & Infants and Toddlers Involved with the Child Welfare System

◆ Because maltreated infants and toddlers are at increased risk for developmental delays, federal law requires states to screen and/or refer infants and toddlers who have experienced neglect or abuse to Early Intervention (EI) for eligibility determination and services. A national study found that over 35% of infants and toddlers involved in child welfare investigations had delays or disabilities that would make them eligible for EI, but only 13% were receiving services.¹⁵

◆ Rhode Island specifically allows infants and toddlers who have experienced trauma, neglect, or abuse to be determined eligible for EI through “informed clinical opinion – family circumstances” even if the child does not have a measurable developmental delay or disability.¹⁶

◆ In Rhode Island in State Fiscal Year 2025, there were 578 children under age three who were victims of child neglect or abuse or involved with an indicated case. Of these, 551 (95%) were referred to First Connections or Early Intervention for screening/evaluation. Of the 188 infants and toddlers referred to EI for evaluation, 140 (74%) were determined eligible for EI. Of all 578 victims, 24% were determined eligible for EI.¹⁷

Table 28.

Indicated Investigations of Child Neglect and Abuse, Rhode Island, 2025

CITY/TOWN	# OF CHILDREN UNDER AGE 18	# OF INDICATED INVESTIGATIONS OF CHILD NEGLECT/ABUSE	INDICATED INVESTIGATIONS PER 1,000 CHILDREN	# OF VICTIMS OF CHILD NEGLECT/ABUSE	VICTIMS OF CHILD NEGLECT/ABUSE PER 1,000 CHILDREN
Barrington	4,489	12	2.7	17	3.8
Bristol	2,887	27	9.4	31	10.7
Burrillville	3,229	23	7.1	26	8.1
Central Falls	6,411	70	10.9	67	10.5
Charlestown	1,161	<6	3.4	<6	1.7
Coventry	6,655	45	6.8	52	7.8
Cranston	15,744	83	5.3	87	5.5
Cumberland	7,550	29	3.8	28	3.7
East Greenwich	3,465	13	3.8	9	2.6
East Providence	7,886	75	9.5	85	10.8
Exeter	1,175	<6	4.3	11	9.4
Foster	790	<6	6.3	15	19.0
Glocester	1,896	12	6.3	8	4.2
Hopkinton	1,613	11	6.8	7	4.3
Jamestown	871	<6	3.4	7	8.0
Johnston	5,119	37	7.2	36	7.0
Lincoln	4,640	36	7.8	35	7.5
Little Compton	568	<6	3.5	0	0.0
Middletown	3,487	25	7.2	17	4.9
Narragansett	1,651	8	4.8	6	3.6
New Shoreham	189	<6	5.3	<6	5.3
Newport	3,660	37	10.1	55	15.0
North Kingstown	5,496	31	5.6	31	5.6
North Providence	5,802	64	11.0	49	8.4
North Smithfield	2,274	15	6.6	12	5.3
Pawtucket	16,455	220	13.4	292	17.7
Portsmouth	3,444	13	3.8	11	3.2
Providence	41,021	484	11.8	530	12.9
Richmond	1,627	7	4.3	9	5.5
Scituate	1,866	8	4.3	6	3.2
Smithfield	3,411	26	7.6	31	9.1
South Kingstown	4,339	24	5.5	29	6.7
Tiverton	2,723	17	6.2	23	8.4
Warren	1,826	20	11.0	16	8.8
Warwick	14,034	108	7.7	140	10.0
West Greenwich	1,251	<6	4.0	8	6.4
West Warwick	5,787	79	13.7	78	13.5
Westerly	3,826	29	7.6	33	8.6
Woonsocket	9,467	173	18.3	207	21.9
Unknown Residence	NA	15	NA	<6	NA
Out of State	NA	30	NA	0	NA
Five Core Cities	77,014	984	12.8	1,151	14.9
Remainder of State	132,771	902	6.8	956	7.2
Rhode Island	209,785	1,886	9.0	2,107	10.0

Source of Data for Table/Methodology

Data are from the Rhode Island Department of Children, Youth and Families, Rhode Island Children's Information System (RICHIST), Calendar Year 2025. These data include child victims living out-of-state and in unknown residences.

Victims of child neglect/abuse are unduplicated counts of victims with substantiated allegations of child neglect and/or abuse. More than one victim can be involved in an investigation.

An indicated investigation is an investigated report of child neglect and/or abuse for which a preponderance of evidence exists that child neglect and/or abuse occurred. An indicated investigation can involve more than one child and multiple allegations.

The denominator is the number of children under age 18 according to the U.S. Census 2020 and the numerator is an unduplicated count of child victims.

Five core cities are Central Falls, Newport, Pawtucket, Providence, and Woonsocket.

References

- U.S. Department of Health and Human Services, Administration for Children and Families. (2023). *2023/2024 prevention resource guide*. Children's Bureau.
- Child Welfare Information Gateway. (2019). *Long-term consequences of child abuse and neglect*. U.S. Department of Health and Human Services, Children's Bureau.
- Strathearn, L., Giannotti, M., Mills, R., Kisely, S., Najman, J., & Abajobir, A. (2020). Long-term cognitive, psychological, and health outcomes associated with child abuse and neglect. *Pediatrics*, 146(4).
- Child Protective Services. (n.d.). Retrieved February 16, 2026, from <https://dcyf.ri.gov/services/child-protective-services>
- Palusci, V. J. (2025). *Long-term health care savings of preventing child maltreatment*. *Frontiers in Pediatrics*, 13(1719755), 1719755.
- Rhode Island Department of Children, Youth and Families. (n.d.). *The family services unit*. Retrieved January 17, 2025, from <https://dcyf.ri.gov/services/division-family-services>

(continued on page 185)

¹² Rhode Island Coalition Against Domestic Violence. (2022). *2021 Annual report*. <https://ricadv.org/annual-reports/>

¹³ Rhode Island Coalition Against Domestic Violence. (2025).

¹⁴ Sojourner House. (2025).

¹⁵ DeBoard-Lucas, R., Wasserman, K., McAlister Groves, B., & Bair-Merritt, M. (2013). *Promising futures: 16 trauma-informed, evidence-based recommendations for advocates working with children exposed to intimate partner violence*.

¹⁶ The Educational Fund to Stop Gun Violence. (2020). *Domestic violence and firearms*. efsy.org

¹⁷ Rhode Island General Law, 8-8.3-3.

(continued from page 105)

References for Child Neglect and Abuse

⁷ Rhode Island Department of Children, Youth and Families. (n.d.). *Program: Family Care Community Partnerships (FCCPs)*. Retrieved January 17, 2025, from <https://dcyf.ri.gov/services/behavioral-health/central-referral-unit>

⁸ Rhode Island Department of Children, Youth and Families. (2025). *Rhode Island Children's Information System (RICHIST)*.

⁹ Rhode Island Department of Children, Youth and Families. (2024). *Guide for parents and caregivers involved with child protective services (CPS): Rights, responsibilities, and answers to frequently asked questions*. <https://dcyf.ri.gov/sites/g/files/xkgbur416/files/2024-08/A.%20%202024%20CPS%20brochure%20%20English%20%201000%20copies.pdf>

¹⁰ Child Protective Services Rules and Regulations, 214-RICR-20-00-1 (2022). https://rules.sos.ri.gov/Regulations/part/214-20-00-1?reg_id=9168

¹¹ Rhode Island Department of Health. (2020-2024). *Hospital Discharge Data and Vital Records*.

¹² U.S. Department of Health & Human Services, Administration for Children and Families, Administration on Children, Youth, & Children's Bureau. (2026). *Child maltreatment 2024*. U.S. Department of Health & Human Services. <https://acf.gov/sites/default/files/documents/cb/cm2024.pdf>

¹³ Monahan, E. K., Grewal-Kök, Y., Cusick, G., & Anderson, C. (2023). *Economic and concrete supports: An evidence-based service for child welfare prevention*. Chapin Hall at the University of Chicago.

¹⁴ Centers for Disease Control and Prevention. (2024). *About child sexual abuse*. Child Abuse and Neglect Prevention. <https://www.cdc.gov/child-abuse-neglect/about/about-child-sexual-abuse.html>

¹⁵ Prenatal to 3 Policy Impact Center. (n.d.). *What are Early Intervention services and why are they important?* Retrieved March 7, 2024, from www.pn3policy.org

¹⁶ Rhode Island Executive Office of Health and Human Services. (2018). *Rhode Island Early Intervention certification standards policies and procedures: IV. Eligibility determination*.

¹⁷ Department of Children, Youth and Families. (2026). *Interagency data, State Fiscal Year 2025*.

(continued from page 107)

References for Children in Out-of-Home Placement

¹ Casey Family Programs. (2023). *What impacts placement stability?* <https://www.casey.org/media/23.07-QFF-SF-Placement-Stability-Impacts.pdf>

² Children's Bureau. (2021). *In-home services to strengthen children and families*. https://cwig-prod-prod-drupal-s3fs-us-east-1.s3.amazonaws.com/public/documents/inhome_services.pdf

³ U.S. Department of Health and Human Services, Administration for Children and Families. (1998). *Program instruction: Adoption and Safe Families Act of 1997*. <https://acf.gov/sites/default/files/documents/cb/pi9814.pdf>

⁴ Casey Family Programs. (2009). *Fostering Connections to Success and Increasing Adoptions Act: Improving lives and opportunities for children in foster care*. <https://www.casey.org/media/FosteringConnectionsSummary.pdf>

⁵ U.S. Department of Health and Human Services. (2021). *Child welfare outcomes 2021*. U.S. Department of Health and Human Services. <https://acf.gov/sites/default/files/documents/cb/cwo-report-to-congress-2021.pdf>

⁶ Child Welfare Information Gateway. (2022). *Health-care coverage for children and youth in foster care—and after*. U.S. Department of Health and Human Services, Administration for Children and Families, Children's Bureau.

⁷ The American Academy of Pediatrics. (2021). *Mental and behavioral health needs of children in foster care*. <https://www.aap.org/en/patient-care/foster-care/mental-and-behavioral-health-needs-of-children-in-foster-care/?srsltid=AfmBOoqD-rfmjV GawDmSu-GSP1T-rs3kXjIy47Oe5nuBmjigYyohkzK4>

⁸ Somers, C. L., Goutman, R. L., Day, A., Enright, O., Crosby, S., & Taussig, H. (2020). Academic achievement among a sample of youth in foster care: The role of school connectedness. *Psychology in the Schools*, 57(12), 1845–1863.

⁹ Rhode Island Department of Education. (2025). *Rhode Island Comprehensive Assessment System (RICAS), 2024-2025*. <https://www3.ride.ri.gov/ADP>

¹⁰ Child Welfare Information Gateway. (2021). *Child welfare practice to address racial disproportionality and disparity*. U.S. Department of Health and Human Services, Children's Bureau.

¹¹ Rhode Island Department of Children, Youth and Families. (2024-2025). *RICHIST*.

¹² Rhode Island Department of Children, Youth and Families. (n.d.). *Family First Prevention Service Act (FFPSA)*. Retrieved March 4, 2025, from <https://dcyf.ri.gov/programs/initiatives/family-first-ffpsa>

¹³ Rivera, M., Cooper, N., Steiger, D., & Tatum, L. (2023). *Brief: Reducing foster care placement through equity-focused implementation of family first. . . Center on Poverty and Inequality, Georgetown Law*.

¹⁴ Washington, T., & Mihalec-Adkins, B. P. (2023). *Kinship care supports the academic performance of children*. Child Trends, Inc. <https://doi.org/10.56417/6688s365k>

¹⁵ Rhode Island Department of Children, Youth and Families. (2012). *Legal guardianship and kinship guardianship assistance (Policy 700.0245)*.

¹⁶ Casey Family Programs. (2022). *Strong Families information packet: What are the outcomes for youth placed in group and institutional settings?* https://www.casey.org/media/22.07-QFF-SF-Group-placements_fnl-1.pdf

¹⁷ Family Focused Treatment Association. (n.d.). *What is treatment foster care?* Retrieved March 4, 2025, from <https://www.ffa.org/page/DefiningTFC>

¹⁸ U.S. Census Bureau, Census. (2020). *Table P2 and Table P4*.

(continued from page 109)

References for Outcomes for Children in DCYF Care

³ Casey Family Programs. (2018). *Strong Families strategy brief: What are some effective strategies for achieving permanency?* <https://www.casey.org/effective-strategies-achieving-permanency/>

⁴ Casey Family Programs. (2023). *Strong Families strategy brief: How can we improve placement stability for children in foster care?* <https://www.casey.org/strategies-improve-placement-stability/>

⁵ Child Welfare Information Gateway. (2020). *Reasonable efforts to preserve or reunify families and achieve permanency for children*. U.S. Department of Health and Human Services, Administration for Children and Families, Children's Bureau.

⁶ Child Welfare Information Gateway. (n.d.). *Achieving and maintaining permanency*. Retrieved February 20, 2025, from www.childwelfare.gov

⁷ Children's Bureau. (2024). *What does it mean to be a legal guardian; where can I find information?* <https://lacf.gov/cb/faq/custody3>

⁸ Guidry, A. A. (2019). *Why relative placement is best for a child in need of care*. American Bar Association. <https://www.americanbar.org/groups/litigation/resources/newsletters/childrens-rights/why-relative-placement-best-child-need-care/>

⁹ Children's Defense Fund. (2010). *Fostering Connections to Success and Increasing Adoptions Act (H.R. 6893) summary*. <https://www.childrensdefense.org/wp-content/uploads/2023/08/FCSIAA-detailed-summary.pdf>

¹⁰ Rosenberg, R., & Abbott, S. (n.d.). *Supporting older youth beyond age 18: Examining data and trends in extended foster care*. Child Trends.

¹¹ Brewsaugh, K., Richardson, A., & Loveless, A. (2021). *State approaches to extending Chafee services to age 23*. <https://lacf.gov/opre/report/state-approaches-extending-chafee-services-age-23-insights-inform-learning-agenda>

¹² Rhode Island Department of Children, Youth and Families. (n.d.). *Data Analytics and Evaluation, Permanency Achieved in 12-Months of Entry, FFY24 Entry Cohort, from Permanency Analytic Report*.

¹³ Capacity Building Center for States. (2021). *What factors support family reunification?* (Vol. 22, Issue 6).